



- ✓ Snap mount configuration allows for quick installation
- ✓ Wiping-action internal contact self-cleans to prevent carbon buildup and increase life

## OPERATION

Delta's plunger switches are used in rugged environments to sense the position of mechanical linkages and controls.

## SPECIFICATIONS

Property		
Life @ Rated Load, Cycles	Inductive	10,000
	Resistive	75,000
Operating Temperature, °F		-20 to +150
Pre-travel, inches		.040-.150

## ENVIRONMENTAL RATINGS

Exposure	Specification
Salt Fog	ASTM B117, 96 Hours
Chemical Resistance	ASTM Ref C Fuel, Diesel Fuel, Oil, Antifreeze, Freon, Paint, Latex, Gasoline, Gas with 10% ethanol, WD-40, Battery Acid, Ammoniated Glass Cleaner, Kerosene, Go Jo, Fertilizer

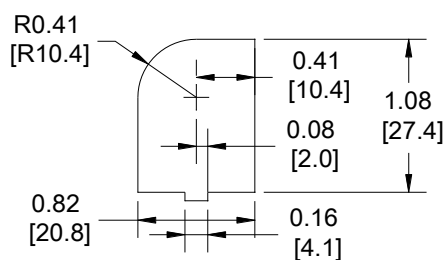
## AVAILABLE CONFIGURATIONS

Part Number	Electrical Configuration	Current Rating @ 12-14 VDC, A	Connector	Mounting Configuration	Environmental Rating	UL Spec (File #)
6440-04	NO	3	Delta 96525, 96526	A	Unsealed	N/A
6440-11	NO	3	Delta 96525, 96526	A	Splash-proof Plunger	N/A
6440-14	NO	3	Delta 96525, 96526	A	Unsealed	N/A
6440-15	NO	3	Delta 96526	A, B, C	Unsealed	N/A
6440-16	NO	5	Delta 96525, 96526	A	Unsealed	UL583 (AU3028)
6440-17	NC	5	Delta 96525, 96526	B	Unsealed	UL583 (AU3028)
6440-19	NO	3	Delta 96525, 96526	A	Unsealed	N/A
6440-21	NO	3	Delta 96525, 96526	A	Unsealed	N/A
6440-53	NC	3	Delta 96525	B	Unsealed	N/A
6440-62	NO	3	Delta 96525, 96526	A	Splash-proof Plunger	N/A
6440-63	NC	3	Delta 96525	B	Splash-proof Plunger	N/A
6440-73	NC	3	Delta 96525	B	Unsealed	N/A
6440-76FR	NO	5	Delta 96525, 96526	A	Splash-proof Plunger	UL583 (AU3028)
6440-77FR	NO	5	Delta 96525, 96526	A	Unsealed	UL1054 (E319443)
6440-604	NO	3	Delta 96525, 96526	A	Unsealed	N/A
6440-653	NC	3	Delta 96525	B	Unsealed	N/A

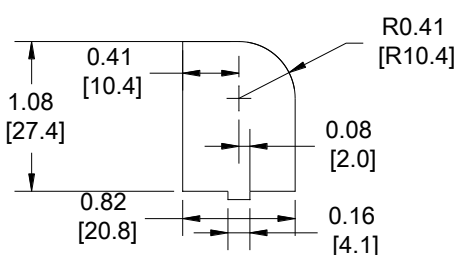
Note: Splash-proof switches have an elastomer boot covering the opening to the switch at the plunger

## MOUNTING

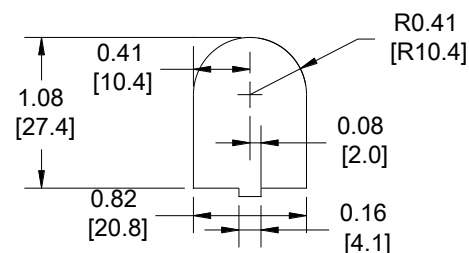
Configuration A



Configuration B

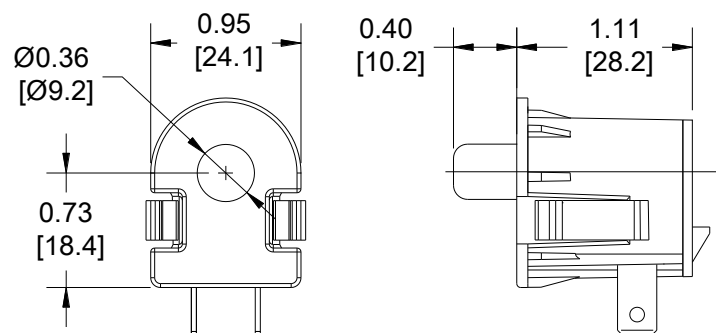


Configuration C

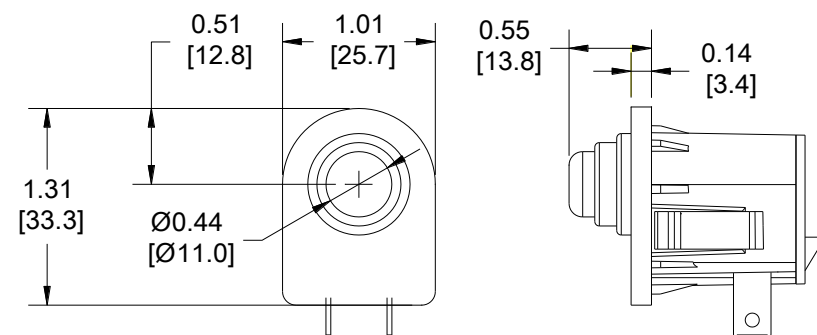


## DIMENSIONS

Standard



Splash-Proof



## ACCESSORIES

Item #	Manufacturer	Description
9910	Delta Systems	Protective Cover

*Note: Life expectancy and performance are largely dependent on application. It is the user's responsibility to determine suitability of this product for the application. This information is intended as a guide for proper application.*