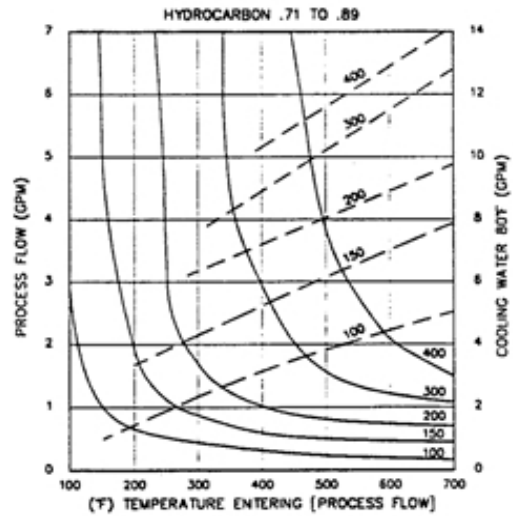
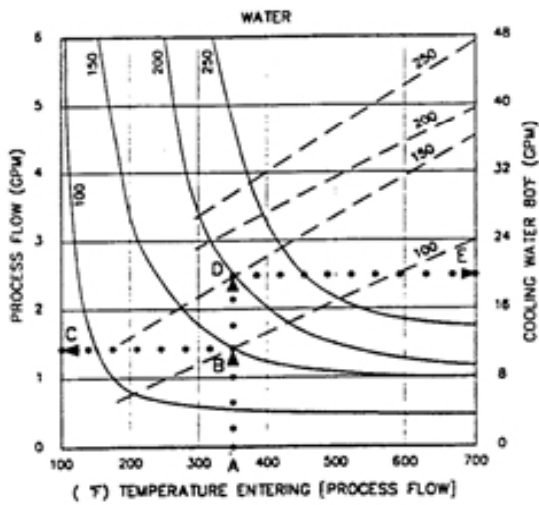
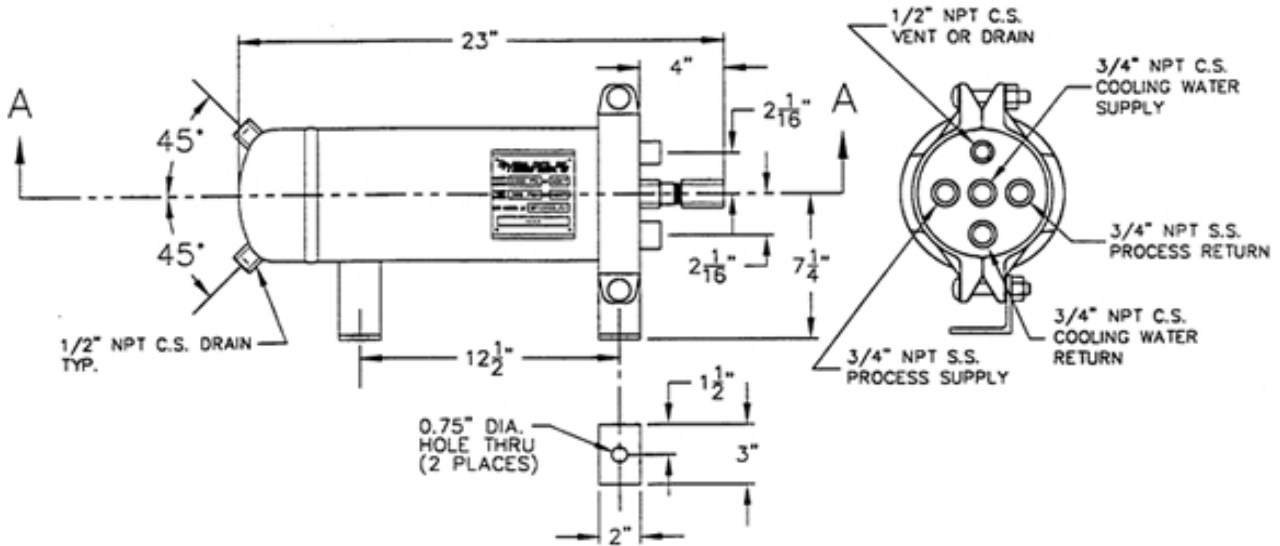


**MODEL H - 1024 - R  
REMOVABLE HEAD WATER COOLED HEAT EXCHANGER**



**SPECIFICATIONS:**

SHELL:	CARBON STEEL, 6" SCH. 40 SMLS
HEADS:	CARBON STEEL, 1" PLATE
MAX. ALLOW. WORKING PRESS.:	500 PSI @ 180°F
COILS:	316 STAINLESS STEEL
TUBE SIZE:	3/4" .065 WALL X 36' LONG
MAX. WORKING PRESSURE:	2000 PSI @ 400° F
COIL SURFACE AREA:	7.0 SQUARE FEET
COIL CONNECTIONS:	3/4" NPT STAINLESS STEEL