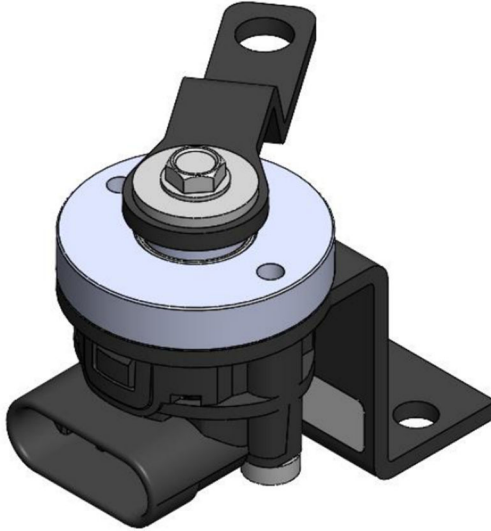


PRODUCT DESCRIPTION

WM-H11 Hub Angle Sensor



The WM-H11 is a high-strength rotating hub that can detect and output relative angular position, ideal for a broad range of applications in harsh environments. The sensor accepts the attachment of various levers and linkages, making it suitable for measuring both operator input and relative position of machine elements such as segments of articulated vehicles.

Redundant hall-effect sensors are integrated into the unit, providing dual linear output voltages proportional to angular rotation of the lever arm via an integrated sealed connector.

The mechanism and electronics are sealed against water and debris ingress. The lever arm and mounting bracket can be customized to the application.

SPECIFICATIONS

Specification	Value
Body Diameter	42 mm
Length, overall*	71 mm
Height, overall*	62 mm
Lever arm hub-to-linkage radius*	60 mm
Mounting attachment*	2X 7 mm diam. holes, 24 mm spacing
Lever arm linkage attachment*	9 mm diam. hole
Assembly weight*	0.20 kg
Angular travel	360°
Angular measurement range	Fully configurable
IP rating	Sensor: IP69K & IP68S Mechanical: IP68S
Lifecycle rating	1 million cycles

Vibration	Frequency: 5 Hz to 500 Hz Amplitude: 4.0 G _{rms}
Shock	SAE J1455, 1 m drop to concrete
Operating temperature	-40° C to 85° C
Storage temperature	-40° C to 85° C
Humidity	0% to 95%
Connector type	APTIV Metri-Pack series 150 sealed connector
Supply voltage	5 V regulated supply
Electrical output	Dual APS (Dual PWM as option)
Supply Current	10 mA per channel
Linearity	±2%
Accuracy	±2%
Sensor mounting configuration	Integrated
Electromagnetic compatibility	ISO 7637 ISO 10605 ISO 11452 ISO 16750 CISPR25

* Dimension with standard lever arm and mounting bracket; may be changed via custom configuration

CONFIGURABILITY

- **Mounting Bracket** – overall geometry including mounting hole pattern and offset be configured for application
- **Lever Arm** – length and linkage attachment may be configured for application
- **Sensor Signal Type** –Dual Analog as standard, Dual PWM option available
- **Measurement Angle Range** – fully configurable